

Chapter 26

Ethernet: Distributed Packet Switching for Local Computer Networks¹

Robert M. Metcalfe / David R. Boggs

Summary Ethernet is a branching broadcast communication system for carrying digital data packets among locally distributed computing stations. The packet transport mechanism provided by Ethernet has been used to build systems which can be viewed as either local computer networks or loosely coupled multiprocessors. An Ethernet's shared communication facility, its Ether, is a passive broadcast medium with no central control. Coordination of access to the Ether for packet broadcasts is distributed among the contending transmitting stations using controlled statistical arbitration. Switching of packets to their destinations on the Ether is distributed among the receiving stations using packet address recognition. Design principles and implementations are described, based on experience with an operating Ethernet of 100 nodes along a kilometer of coaxial cable. A model for estimating performance under heavy loads and a packet protocol for error controlled communication are included for completeness.

1. Background

One can characterize distributed computing as a spectrum of activities varying in their degree of decentralization, with one extreme being remote computer networking and the other extreme being multiprocessing. Remote computer networking is the loose interconnection of previously isolated, widely separated, and rather large computing systems. Multiprocessing is the construction of previously monolithic and serial computing systems from increasingly numerous and smaller pieces computing in parallel. Near the middle of this spectrum is local networking, the interconnection of computers to gain the resource sharing of computer networking and the parallelism of multiprocessing.

The separation between computers and the associated bit rate of their communication can be used to divide the distributed computing spectrum into broad activities. The product of separation and bit rate, now about 1 gigabit-meter per second (1

Gbps), is an indication of the limit of current communication technology and can be expected to increase with time:

Activity	Separation	Bit rate
Remote networks	> 10 km	< .1 Mbps
Local networks	10-.1 km	.1-10 Mbps
Multiprocessors	< .1 km	> 10 Mbps

1.1 Remote Computer Networking

Computer networking evolved from telecommunications *terminal-computer* communication, where the object was to connect remote terminals to a central computing facility. As the need for *computer-computer* interconnection grew, computers themselves were used to provide communication [Abramson and Kuo, 1973; Baran, 1964; Rustin, 1970]. Communication *using* computers as packet switches [Heart et al., 1970; Heart et al., 1972; Kahn, 1975; Metcalfe, 1972a; Metcalfe, 1972b; Metcalfe, 1973a; Metcalfe, 1973b; Roberts and Wessler, 1970] and communications *among* computers for resource sharing [Crocker et al., 1972; Thomas, 1973] were both advanced by the development of the Arpa Computer Network.

The Aloha Network at the University of Hawaii was originally developed to apply packet radio techniques for communication between a central computer and its terminals scattered among the Hawaiian Islands [Abramson, 1970; Abramson and Kuo, 1973]. Many of the terminals are now minicomputers communicating among themselves using the Aloha Network's Menehune as a packet switch. The Menehune and an Arpanet Imp are now connected, providing terminals on the Aloha Network access to computing resources on the U.S. mainland.

Just as computer networks have grown across continents and oceans to interconnect major computing facilities around the world, they are now growing down corridors and between buildings to interconnect minicomputers in offices and laboratories [Ashenurst and Vonderohe, 1975; Farber et al., 1973; Farber, 1975; Fraser, 1975; Willard, 1973].

1.2 Multiprocessing

Multiprocessing first took the form of connecting an I/O controller to a large central computer; IBM's Asp is a classic example [Rustin, 1970]. Next, multiple central processors were connected to a common memory to provide more power for compute-bound applications [Thorton, 1970]. For certain of these applications, more exotic multiprocessor architectures such as Illiac IV were introduced [Barnes et al., 1968].

More recently minicomputers have been connected in multiprocessor configurations for economy, reliability, and increased

¹Comm. ACM, vol. 19, no. 7, July 1976, pp. 395-404.

system modularity [Ornstein et al., 1975; Wulf and Bell, 1972]. The trend has been toward decentralization for reliability; loosely coupled multiprocessor systems depend less on shared central memory and more on *thin wires* for interprocess communication with increased component isolation [Metcalf, 1972a; Roberts and Wessler, 1970]. With the continued thinning of interprocessor communication for reliability and the development of distributable applications, multiprocessing is gradually approaching a local form of distributed computing.

1.3 Local Computer Networking

Ethernet shares many objectives with other local networks such as Mitre's Mitrix, Bell Telephone Laboratory's Spider, and U.C. Irvine's Distributed Computing System (DCS) [Farber et al., 1973; Farber, 1975; Fraser, 1975; Willard, 1973]. Prototypes of all four local networking schemes operate at bit rates between one and three megabits per second. Mitrix and Spider have a central minicomputer for switching and bandwidth allocation, while DCS and Ethernet use distributed control. Spider and DCS use a ring communication path, Mitrix uses off-the-shelf CATV technology to implement two one-way busses, and our experimental Ethernet uses a branching two-way passive bus. Differences among these systems are due to differences among their intended applications, differences among the cost constraints under which trade-offs were made, and differences of opinion among researchers.

Before going into a detailed description of Ethernet, we offer the following overview (see Fig. 1).

2. System Summary

Ethernet is a system for local communication among computing stations. Our experimental Ethernet uses tapped coaxial cables to carry variable length digital data packets among, for example, personal minicomputers, printing facilities, large file storage devices, magnetic tape backup stations, larger central computers, and longer-haul communication equipment.

The shared communication facility, a branching Ether, is passive. A station's Ethernet interface connects bit-serially through an interface cable to a transceiver which in turn taps into the passing Ether. A packet is broadcast onto the Ether, is heard by all stations, and is copied from the Ether by destinations which select it according to the packet's leading address bits. This is broadcast packet switching and should be distinguished from store-and-forward packet switching, in which routing is performed by intermediate processing elements. To handle the demands of growth, an Ethernet can be extended using packet repeaters for signal regeneration, packet filters for traffic localization, and packet gateways for internetwork address extension.

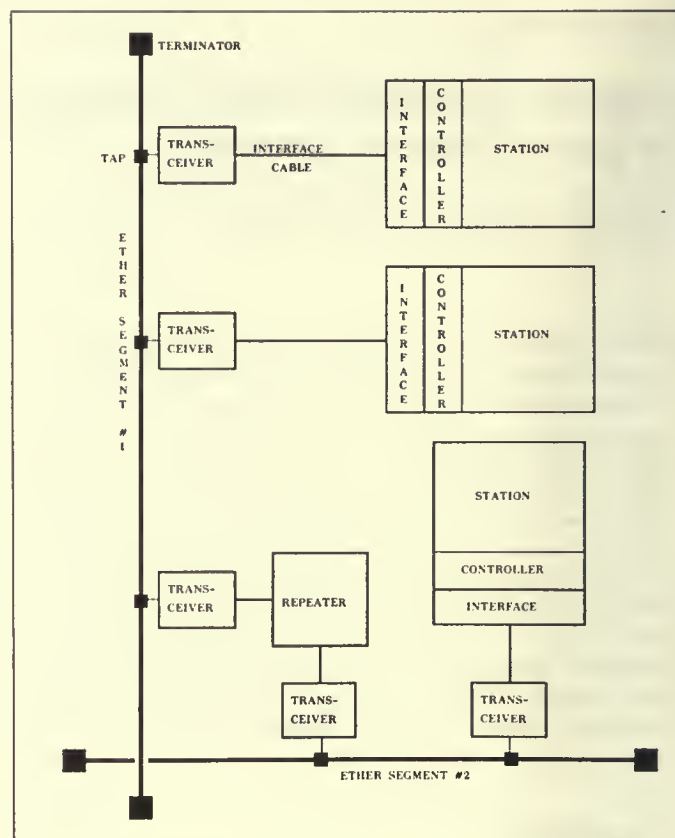


Fig. 1. A two-segment Ethernet.

Control is completely distributed among stations, with packet transmissions coordinated through statistical arbitration. Transmissions initiated by a station defer to any which may already be in progress. Once started, if interference with other packets is detected, a transmission is aborted and rescheduled by its source station. After a certain period of interference-free transmission, a packet is heard by all stations and will run to completion without interference. Ethernet controllers in colliding stations each generate random retransmission intervals to avoid repeated collisions. The mean of a packet's retransmission intervals is adjusted as a function of collision history to keep Ether utilization near the optimum with changing network load.

Even when transmitted without source-detected interference, a packet may still not reach its destination without error; thus, packets are delivered *only with high probability*. Stations requiring a residual error rate lower than that provided by the bare Ethernet packet transport mechanism must follow mutually agreed upon packet protocols.

3. Design Principles

Our object is to design a communication system which can grow smoothly to accommodate several buildings full of personal computers and the facilities needed for their support.

Like the computing stations to be connected, the communication system must be inexpensive. We choose to distribute control of the communications facility among the communicating computers to eliminate the reliability problems of an active central controller, to avoid creating a bottleneck in a system rich in parallelism, and to reduce the fixed costs which make small systems uneconomical.

Ethernet design started with the basic idea of packet collision and retransmission developed in the Aloha Network [Abramson, 1970]. We expected that, like the Aloha Network, Ethernets would carry bursty traffic so that conventional synchronous time-division multiplexing (STDM) would be inefficient [Abramson, 1970; Abramson and Kuo, 1973; Metcalfe, 1973a; Roberts and Wessler, 1970]. We saw promise in the Aloha approach to distributed control of radio channel multiplexing and hoped that it could be applied effectively with media suited to local computer communication. With several innovations of our own, the promise is realized.

Ethernet is named for the historical *luminiferous ether* through which electromagnetic radiations were once alleged to propagate. Like an Aloha radio transmitter, an Ethernet transmitter broadcasts completely-addressed transmitter-synchronous bit sequences called packets onto the Ether and hopes that they are heard by the intended receivers. The Ether is a logically passive medium for the propagation of digital signals and can be constructed using any number of media including coaxial cables, twisted pairs, and optical fibers.

3.1 Topology

We cannot afford the redundant connections and dynamic routing of store-and-forward packet switching to assure reliable communication, so we choose to achieve reliability through simplicity. We choose to make the shared communication facility passive so that the failure of an active element will tend to affect the communications of only a single station. The layout and changing needs of office and laboratory buildings leads us to pick a network topology with the potential for convenient incremental extension and reconfiguration with minimal service disruption.

The topology of the Ethernet is that of an unrooted tree. It is a *tree* so that the Ether can branch at the entrance to a building's corridor, yet avoid multipath interference. There must be only one path through the Ether between any source and destination; if more than one path were to exist, a transmission would interfere with itself, repeatedly arriving at its intended destination having

travelled by paths of different length. The Ether is *unrooted* because it can be extended from any of its points in any direction. Any station wishing to join an Ethernet taps into the Ether at the nearest convenient point.

Looking at the relationship of interconnection and control, we see that Ethernet is the dual of a star network. Rather than *distributed* interconnection through many separate links and *central* control in a switching node, as in a star network, the Ethernet has *central* interconnection through the Ether and *distributed* control among its stations.

Unlike an Aloha Network, which is a star network with an outgoing broadcast channel and an incoming multi-access channel, an Ethernet supports many-to-many communication with a single broadcast multi-access channel.

3.2 Control

Sharing of the Ether is controlled in such a way that it is not only possible but probable that two or more stations will attempt to transmit a packet at roughly the same time. Packets which overlap in time on the Ether are said to *collide*; they interfere so as to be unrecognizable by a receiver. A station recovers from a detected collision by abandoning the attempt and retransmitting the packet after some dynamically chosen random time period. Arbitration of conflicting transmission demands is both distributed and statistical.

When the Ether is largely unused, a station transmits its packets at will, the packets are received without error, and all is well. As more stations begin to transmit, the rate of packet interference increases. Ethernet controllers in each station are built to adjust the mean retransmission interval in proportion to the frequency of collisions; sharing of the Ether among competing station-station transmissions is thereby kept near the optimum [Metcalfe, 1973a; Metcalfe, 1973b].

A degree of cooperation among the stations is required to share the Ether equitably. In demanding applications certain stations might usefully take transmission priority through some systematic violation of equity rules. A station could usurp the Ether by not adjusting its retransmission interval with increasing traffic or by sending very large packets. Both practices are now prohibited by low-level software in each station.

3.3 Addressing

Each packet has a source and destination, both of which are identified in the packet's header. A packet placed on the Ether eventually propagates to all stations. Any station can copy a packet from the Ether into its local memory, but normally only an active destination station matching its address in the packet's header will do so as the packet passes. By convention, a zero destination

address is a wildcard and matches all addresses; a packet with a destination of zero is called a *broadcast packet*.

3.4 Reliability

An Ethernet is probabilistic. Packets may be lost due to interference with other packets, impulse noise on the Ether, an inactive receiver at a packet's intended destination, or purposeful discard. Protocols used to communicate through an Ethernet must assume that packets will be received correctly at intended destinations *only with high probability*.

An Ethernet gives its *best efforts* to transmit packets successfully, but it is the responsibility of processes in the source and destination stations to take the precautions necessary to assure reliable communication of the quality they themselves desire [Metcalfe, 1972a; Metcalfe, 1973b]. Recognizing the costliness and dangers of promising “error-free” communication, we refrain from guaranteeing reliable delivery of any single packet to get both economy of transmission and high reliability averaged over many packets [Metcalfe, 1973b]. Removing the responsibility for reliable communication from the packet transport mechanism allows us to tailor reliability to the application and to place error recovery where it will do the most good. This policy becomes more important as Ethernets are interconnected in a hierarchy of networks through which packets must travel farther and suffer greater risks.

3.5 Mechanisms

A station connects to the Ether with a *tap* and a *transceiver*. A tap is a device for physically connecting to the Ether while disturbing its transmission characteristics as little as possible. The design of the transceiver must be an exercise in paranoia. Precautions must be taken to insure that likely failures in the transceiver or station do not result in pollution of the Ether. In particular, removing power from the transceiver should cause it to disconnect from the Ether.

Five mechanisms are provided in our experimental Ethernet for reducing the probability and cost of losing a packet. These are (1) carrier detection, (2) interference detection, (3) packet error detection, (4) truncated packet filtering, and (5) collision consensus enforcement.

3.5.1 Carrier Detection. As a packet's bits are placed on the Ether by a station; they are phase encoded (like bits on a magnetic tape), which guarantees that there is at least one transition on the Ether during each bit time. The passing of a packet on the Ether can therefore be detected by listening for its transitions. To use a radio analogy, we speak of the presence of *carrier* as a packet passes a transceiver. Because a station can sense the carrier of a passing packet, it can delay sending one of its own until the

detected packet passes safely. The Aloha Network does not have carrier detection and consequently suffers a substantially higher collision rate. Without carrier detection, efficient use of the Ether would decrease with increasing packet length. In Sec. 6 below, we show that with carrier detection, Ether efficiency increases with increasing packet length.

With carrier detection we are able to implement *deference*: no station will start transmitting while hearing carrier. With deference comes *acquisition*: once a packet transmission has been in progress for an Ether end-to-end propagation time, all stations are hearing carrier and are deferring; the Ether has been acquired and the transmission will complete without an interfering collision.

With carrier detection, collisions should occur only when two or more stations find the Ether silent and begin transmitting simultaneously within an Ether end-to-end propagation time. This will almost always happen immediately after a packet transmission during which two or more stations were deferring. Because stations do not now randomize after deferring, when the transmission terminates, the waiting stations pile on together, collide, randomize, and retransmit.

3.5.2 Interference Detection. Each transceiver has an interference detector. Interference is indicated when the transceiver notices a difference between the value of the bit it is receiving from the Ether and the value of the bit it is attempting to transmit.

Interference detection has three advantages. First, a station detecting a collision knows that its packet has been damaged. The packet can be scheduled for retransmission immediately, avoiding a long acknowledgment timeout. Second, interference periods on the Ether are limited to a maximum of one round trip time. Colliding packets in the Aloha Network run to completion, but the truncated packets resulting from Ethernet collisions waste only a small fraction of a packet time on the Ether. Third, the frequency of detected interference is used to estimate Ether traffic for adjusting retransmission intervals and optimizing channel efficiency.

3.5.3 Packet Error Detection. As a packet is placed on the Ether, a checksum is computed and appended. As the packet is read from the Ether, the checksum is recomputed. Packets which do not carry a consistent checksum are discarded. In this way transmission errors, impulse noise errors, and errors due to undetected interference are caught at a packet's destination.

3.5.4 Truncated Packet Filtering. Interference detection and deference cause most collisions to result in *truncated packets* of only a few bits; colliding stations detect interference and abort

transmission within an Ether round trip time. To reduce the processing load that the rejection of such obviously damaged packets would place on listening station software, truncated packets are filtered out in hardware.

3.5.5 Collision Consensus Enforcement. When a station determines that its transmission is experiencing interference, it momentarily jams the Ether to insure that all other participants in the collision will detect interference and, because of deference, will be forced to abort. Without this *collision consensus enforcement* mechanism, it is possible that the transmitting station which would otherwise be the last to detect a collision might not do so as the other interfering transmissions successively abort and stop interfering. Although the packet may look good to that last transmitter, different path lengths between the colliding transmitters and the intended receiver will cause the packet to arrive damaged.

4. Implementation

Our choices of 1 kilometer, 3 megabits per second, and 256 stations for the parameters of an experimental Ethernet were based on characteristics of the locally distributed computer communication environment and our assessments of what would be marginally achievable; they were certainly not hard restrictions essential to the Ethernet concept.

We expect that a reasonable maximum network size would be on the order of 1 kilometer of cable. We used this working number to choose among Ethers of varying signal attenuation and to design transceivers with appropriate power and sensitivity.

The dominant station on our experimental Ethernet is a minicomputer for which 3 megabits per second is a convenient data transfer rate. By keeping the peak rate well below that of the computer's path to main memory, we reduce the need for expensive special-purpose packet buffering in our Ethernet interfaces. By keeping the peak rates as high as is convenient, we provide for larger numbers of stations and more ambitious multiprocessing communications applications.

To expedite low-level packet handling among 256 stations, we allocate the first 8-bit byte of the packet to be the destination address field and the second byte to be the source address field (see Fig. 2). 256 is a number small enough to allow each station to get an adequate share of the available bandwidth and approaches the limit of what we can achieve with current techniques for tapping cables. 256 is only a convenient number for the lowest level of protocol; higher levels can accommodate extended address spaces with additional fields inside the packet and software to interpret them.

Our experimental Ethernet implementation has four major

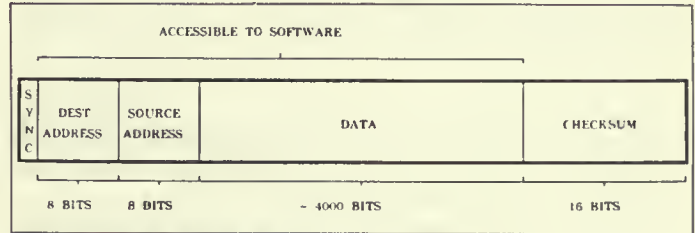


Fig. 2. Ethernet packet layout.

parts: the Ether, transceivers, interfaces, and controllers. (See Fig. 1.)

4.1 Ether

We chose to implement our experimental Ether using low-loss coaxial cable with off-the-shelf CATV taps and connectors. It is possible to mix Ethers on a single Ethernet; we use a smaller-diameter coax for convenient connection within station clusters and a larger-diameter coax for low-loss runs between clusters. The cost of coaxial cable Ether is insignificant relative to the cost of the distributed computing systems supported by Ethernet.

4.2 Transceivers

Our experimental transceivers can drive a kilometer of coaxial cable Ether tapped by 256 stations transmitting at 3 megabits per second. The transceivers can *endure* (i.e. work after) sustained direct shorting, improper termination of the Ether, and simultaneous drive by all 256 stations; they can *tolerate* (i.e. work during) ground differentials and everyday electrical noise, from typewriters or electric drills, encountered when stations are separated by as much as a kilometer.

An Ethernet transceiver attaches directly to the Ether which passes by in the ceiling or under the floor. It is powered and controlled through five twisted pairs in an interface cable carrying transmit data, receive data, interference detect, and power supply voltages. When unpowered, the transceiver disconnects itself electrically from the Ether. Here is where our fight for reliability is won or lost; a broken transceiver can, but should not, bring down an entire Ethernet. A watchdog timer circuit in each transceiver attempts to prevent pollution of the Ether by shutting down the output stage if it acts suspiciously. For transceiver simplicity we use the Ether's base frequency band, but an Ethernet could be built to use any suitably sized band of a frequency division multiplexed Ether.

Even though our experimental transceivers are very simple and can tolerate only limited signal attenuation, they have proven quite adequate and reliable. A more sophisticated transceiver

design might permit passive branching of the Ether and wider station separation.

4.3 Interface

An Ethernet interface serializes and deserializes the parallel data used by its station. There are a number of different stations on our Ethernet; an interface must be built for each kind.

Each interface is equipped with the hardware necessary to compute a 16-bit cyclic redundancy checksum (CRC) on serial data as it is transmitted and received. This checksum protects only against errors in the Ether and specifically not against errors in the parallel portions of the interface hardware or station. Higher-level software checksums are recommended for applications in which a higher degree of reliability is required.

A transmitting interface uses a packet buffer address and word count to serialize and phase encode a variable number of 16-bit words which are taken from the station's memory and passed to the transceiver, preceded by a start bit (called SYNC in Fig. 2) and followed by the CRC. A receiving interface uses the appearance of carrier to detect the start of a packet and uses the SYNC bit to acquire bit phase. As long as carrier stays on, the interface decodes and deserializes the incoming bit stream depositing 16-bit words in a packet buffer in the station's main memory. When carrier goes away, the interface checks that an integral number of 16-bit words has been received and that the CRC is correct. The last word received is assumed to be the CRC and is not copied into the packet buffer.

These interfaces ordinarily include hardware for accepting only those packets with appropriate addresses in their headers. Hardware address filtering helps a station avoid burdensome software packet processing when the Ether is very busy carrying traffic intended for other stations.

4.4 Controller

An Ethernet controller is the station-specific low-level firmware or software for getting packets onto and out of the Ether. When a source-detected collision occurs, it is the source controller's responsibility to generate a new random retransmission interval based on the updated collision count. We have studied a number of algorithms for controlling retransmission rates in stations to maintain Ether efficiency [Metcalfe, 1973a; Metcalfe, 1974]. The most practical of these algorithms estimate traffic load using recent collision history.

Retransmission intervals are multiples of a *slot*, the maximum time between starting a transmission and detecting a collision, one end-to-end round trip delay. An Ethernet controller begins transmission of each new packet with a mean retransmission interval of one slot. Each time a transmission attempt ends in collision, the controller delays for an interval of random length with a mean twice that of the previous interval, defers to any

passing packet, and then attempts retransmission. This heuristic approximates an algorithm we have called Binary Exponential Backoff (see Fig. 3) [Metcalfe, 1974].

When the network is unloaded and collisions are rare, the mean seldom departs from one and retransmissions are prompt. As the traffic load increases, more collisions are experienced, a backlog of packets builds up in the stations, retransmission intervals increase, and retransmission traffic backs off to sustain channel efficiency.

5. Growth

5.1 Signal Cover

One can expand an Ethernet just so far by adding transceivers and Ether. At some point, the transceivers and Ether will be unable to carry the required signals. The *signal cover* can be extended with a simple unbuffered *packet repeater*. In our experimental Ethernet, where because of transceiver simplicity the Ether cannot be branched passively, a simple repeater may join any number of

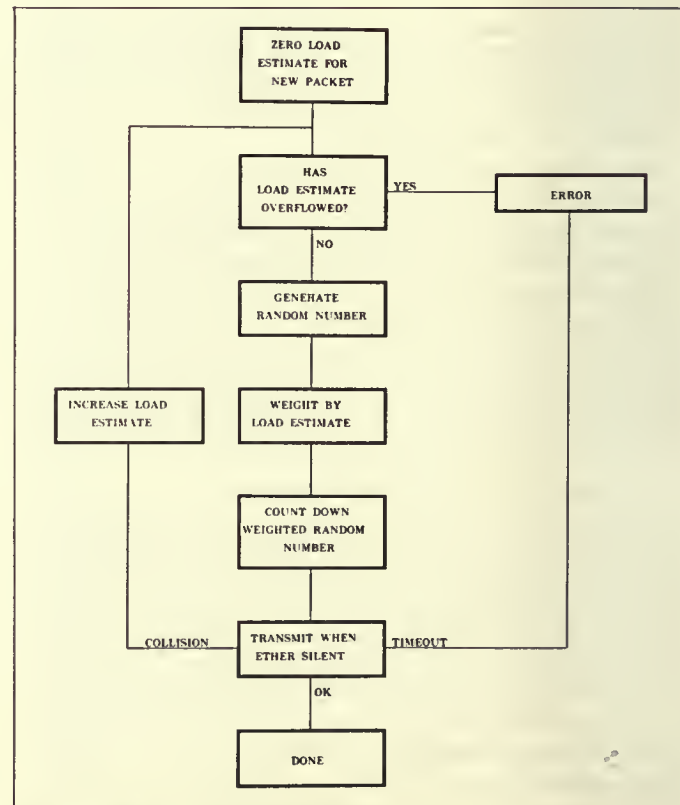


Fig. 3. Collision control algorithm.

Ether *segments* to enrich the topology while extending the signal cover.

We operate an experimental two-segment packet repeater, but hope to avoid relying on them. In branching the Ether and extending its signal cover, there is a trade-off between using sophisticated transceivers and using repeaters. With increased power and sensitivity, transceivers become more expensive and less reliable. The introduction of repeaters into an Ethernet makes the centrally interconnecting Ether active. The failure of a transceiver will sever the communications of its owner; the failure of a repeater partitions the Ether severing many communications.

5.2 Traffic Cover

One can expand an Ethernet just so far by adding Ether and packet repeaters. At some point the Ether will be so busy that additional stations will just divide more finely the already inadequate bandwidth. The *traffic cover* can be extended with an unbuffered traffic-filtering repeater or *packet filter*, which passes packets from one Ether segment to another only if the destination station is located on the new segment. A packet filter also extends the signal cover.

5.3 Address Cover

One can expand an Ethernet just so far by adding Ether, repeaters, and traffic filters. At some point there will be too many stations to be addressed with the Ethernet's 8-bit addresses. The *address cover* can be extended with *packet gateways* and the software addressing conventions they implement [Cerf and Kahn, 1974]. Addresses can be expanded in two directions: *down* into the station by adding fields to identify destination ports or processes within a station, and *up* into the internetwork by adding fields to identify destination stations on remote networks. A gateway also extends the traffic and signal covers.

There can be only one repeater or packet filter connecting two Ether segments; a packet repeated onto a segment by multiple repeaters would interfere with itself. However, there is no limit to the number of gateways connecting two segments; a gateway only repeats packets addressed to itself as an intermediary. Failure of the single repeater connecting two segments partitions the network; failure of a gateway need not partition the net if there are paths through other gateways between the segments.

6. Performance

We present here a simple set of formulas with which to characterize the performance expected of an Ethernet when it is heavily loaded. More elaborate analyses and several detailed simulations have been done, but the following simple model has proven very

useful in understanding the Ethernet's distributed contention scheme, even when it is loaded beyond expectations [Abramson, 1970; Metcalfe, 1973a; Metcalfe, 1973b; Metcalfe, 1974; Murthy, 1975; Roberts, 1973b].

We develop a simple model of the performance of a loaded Ethernet by examining alternating Ether time periods. The first, called a *transmission interval*, is that during which the Ether has been acquired for a successful packet transmission. The second, called a *contention interval*, is that composed of the retransmission slots of Sec. 4.4, during which stations attempt to acquire control of the Ether. Because the model's Ethernets are loaded and because stations defer to passing packets before starting transmission, the slots are synchronized by the tail of the preceding acquisition interval. A slot will be empty when no station chooses to attempt transmission in it and it will contain a collision if more than one station attempts to transmit. When a slot contains only one attempted transmission, then the Ether has been acquired for the duration of a packet, the contention interval ends, and a transmission interval begins.

Let P be the number of bits in an Ethernet *packet*. Let C be the peak *capacity* in bits per second, carried on the Ether. Let T be the *time* in seconds of a slot, the number of seconds it takes to detect a collision after starting a transmission. Let us assume that there are Q stations continuously *queued* to transmit a packet; either the acquiring station has a new packet immediately after a successful acquisition or another station comes ready. Note that Q also happens to give the total *offered load* on the network which for this analysis is always 1 or greater. We assume that a queued station attempts to transmit in the current slot with probability $1/Q$, or delays with probability $1 - (1/Q)$; this is known to be the optimum statistical decision rule, approximated in Ethernet stations by means of our load-estimating retransmission control algorithms [Metcalfe, 1973a; Metcalfe, 1973b].

6.1 Acquisition Probability

We now compute A , the probability that exactly one station attempts a transmission in a slot and therefore *acquires* the Ether. A is $Q \cdot (1/Q) \cdot (1 - (1/Q))^{(Q-1)}$; there are Q ways in which one station can choose to transmit (with probability $(1/Q)$) while $Q - 1$ stations choose to wait (with probability $1 - (1/Q)$). Simplifying,

$$A = (1 - (1/Q))^{(Q-1)}$$

6.2 Waiting Time

We now compute W , the mean number of slots of *waiting* in a contention interval before a successful acquisition of the Ether by a station's transmission. The probability of waiting no time at all is just A , the probability that one and only one station chooses to transmit in the first slot following a transmission. The probability

of waiting 1 slot is $A*(1 - A)$; the probability of waiting i slots is $A*((1 - A)**i)$. The mean of this geometric distribution is

$$W = (1 - A)/A$$

6.3 Efficiency

We now compute E , that fraction of time the Ether is carrying good packets, the *efficiency*. The Ether's time is divided between transmission intervals and contention intervals. A packet transmission takes P/C seconds. The mean time to acquisition is $W*T$. Therefore, by our simple model,

$$E = (P/C)/((P/C) + (W*T))$$

Table 1 presents representative performance figures (i.e. E) for our experimental Ethernet with the indicated packet sizes and number of *continuously queued* stations. The efficiency figures given do not account for inevitable reductions due to headers and control packets nor for losses due to imprecise control of the retransmission parameter $1/Q$; the former is straightforwardly protocol-dependent and the latter requires analysis beyond the scope of this paper. Again, we feel that all of the Ethernets in the table are overloaded; normally loaded Ethernets will usually have a Q much less than 1 and exhibit behavior not covered by this model.

For our calculations we use a C of 3 megabits per second and a T of 16 microseconds. The slot duration T must be long enough to allow a collision to be detected or at least twice the Ether's round trip time. We limit in software the maximum length of our packets to be near 4000 bits to keep the latency of network access down and to permit efficient use of station packet buffer storage.

For packets whose size is about 4000 bits, the efficiency of our experimental Ethernet stays well above 95 percent. For packets with a size approximating that of a slot, Ethernet efficiency

Table 1 Ethernet Efficiency

Q	$P = 4096$	$P = 1024$	$P = 512$	$P = 48$
1	1.0000	1.0000	1.0000	1.0000
2	0.9884	0.9552	0.9143	0.5000
3	0.9857	0.9447	0.8951	0.4444
4	0.9842	0.9396	0.8862	0.4219
5	0.9834	0.9367	0.8810	0.4096
10	0.9818	0.9310	0.8709	0.3874
32	0.9807	0.9272	0.8642	0.3737
64	0.9805	0.9263	0.8627	0.3708
128	0.9804	0.9259	0.8620	0.3693
256	0.9803	0.9257	0.8616	0.3686

approaches $1/e$, the asymptotic efficiency of a slotted Aloha Network [Roberts, 1973b].

7. Protocol

There is more to the construction of a viable packet communication system than simply providing the mechanisms for packet transport. Methods for error correction, flow control, process naming, security, and accounting must also be provided through higher-level protocols implemented on top of the Ether control protocol described in Sections 3 and 4 above [Cerf and Kahn, 1974; Crocker et al., 1972; Farber et al., 1973; Metcalfe, 1973b; Rowe, 1975; Walden, 1972]. Ether control includes packet framing, error detection, addressing, and multi-access control; like other line control procedures, Ethernet is used to support numerous network and multiprocessor architectures [IBM, 1974; IBM, 1975a].

Here is a brief description of one simple error-controlling packet protocol. The EFTP (Ethernet File Transfer Protocol) is of interest both because it is relatively easy to understand and implement correctly and because it has dutifully carried many valuable files during the development of more general and efficient protocols.

7.1. General Terminology

In discussing packet protocols, we use the following generally useful terminology. A packet is said to have a *source* and a *destination*. A flow of data is said to have a *sender* and a *receiver*, recognizing that to support a flow of data some packets (typically acknowledgments) will be sourced at the receiver and destined for the sender. A connection is said to have a *listener* and an *initiator* and a service is said to have a *server* and a *user*. It is very useful to treat these as orthogonal descriptors of the participants in a communication. Of course, a server is usually a listener and the source of data-bearing packets is usually the sender.

7.2 EFTP

The first 16 bits of all Ethernet packets contain its interface-interpretable destination and source station addresses, a byte each, in that order (see Fig. 2). By software convention, the second 16 bits of all Ethernet packets contain the packet type. Different protocols use disjoint sets of packet types. The EFTP uses 5 packet types: data, ack, abort, end, and endreply. Following the 16-bit type word of an EFTP packet are 16 bits of sequence number, 16 bits of length, optionally some 16-bit data words, and finally a 16-bit software checksum word (see Fig. 4). The ethernet's hardware checksum is present only on the Ether and is not counted at this level of protocol.

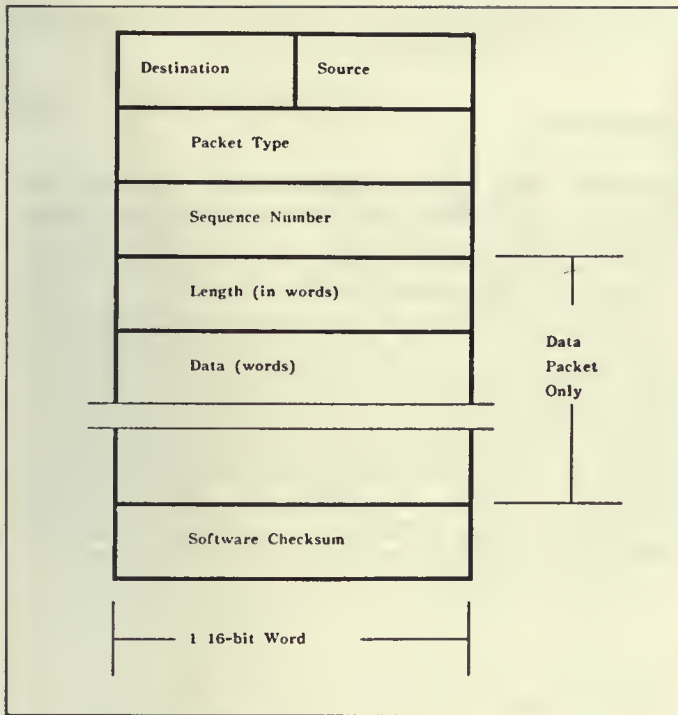


Fig. 4. EFTP packet layout.

It should be obvious that little care has been taken to cram certain fields into just the right number of bits. The emphasis here is on simplicity and ease of programming. Despite this disclaimer, we do feel that it is more advisable to err on the side of spacious fields; try as you may, one field or another will always turn out to be too small.

The software checksum word is used to lower the probability of an undetected error. It serves not only as a backup for the experimental Ethernet's serial hardware 16-bit cyclic redundancy checksum (in Fig. 2), but also for protection against failures in parallel data paths within stations which are not checked by the CRC. The checksum used by the EFTP is a 1's complement add and cycle over the entire packet, including header and content data. The checksum can be ignored at the user's peril at either end; the sender may put all 1's (an impossible value) into the checksum word to indicate to the receiver that no checksum was computed.

7.2.1 Data Transfer. The 16-bit words of a file are carried from sending station to receiving station in data packets consecutively numbered from 0. Each data packet is retransmitted periodically

by the sender until an ack packet with a matching sequence number is returned from the receiver. The receiver ignores all damaged packets, packets from a station other than the sender, and packets whose sequence number does not match either the expected one or the one preceding. When a packet has the expected sequence number, the packet is acked, its data is accepted as part of the file, and the sequence number is incremented. When a packet arrives with a sequence number one less than that expected, it is acknowledged and discarded; the presumption is that its ack was lost and needs retransmission [Metcalfe, 1973b].

7.2.2 End. When all the data has been transmitted, an end packet is sent with the next consecutive sequence number and then the sender waits for a matching endreply. Having accepted an end packet in sequence, the data receiver responds with a matching endreply and then *dallys* for some reasonably long period of time (10 seconds). Upon getting the endreply, the sending station transmits an echoing endreply and is free to go off with the assurance that the file has been transferred successfully. The dallying receiver then gets the echoed endreply and it too goes off assured.

The comparatively complex end-dally sequence is intended to make it practically certain that the sender and receiver of a file will agree on whether the file has been transmitted correctly. If the end packet is lost, the data sender simply retransmits it as it would any packet with an overdue acknowledgement. If the endreply from the data receiver is lost, the data sender will time out in the same way and retransmit the end packet which will in turn be acknowledged by the dallying receiver: If the echoed endreply is lost, the dallying receiver will be inconvenienced having to wait for it, but when it has timed out, the receiver can nevertheless be assured of successful transfer of the file because the end packet has been received.

At any time during all of this, either side is free to decide communication has failed and just give up; it is considered polite to send an abort packet to end the communication promptly in the event of, say, a user-initiated abort or a file system error.

7.2.3 EFTP Shortcomings. The EFTP has been very useful, but its shortcomings are many. First, the protocol provides only for file transfer from station to station in a single network and specifically not from process to process within stations either on the same network or through a gateway. Second, process rendezvous is degenerate in that there are no mechanisms for finding processes by name or for convenient handling of multiple users by a single server. Third, there is no real flow control. If data arrives at a receiver unable to accept it into its buffers, the data can

simply be thrown away with complete assurance that it will be retransmitted eventually. There is no way for a receiver to quench the flow of such wasted transmissions or to expedite retransmission. Fourth, data is transmitted in integral numbers of 16-bit words belonging to unnamed files and thus the EFTP is either terribly restrictive or demands some nested file transfer formats internal to its data words. And fifth, functional generality is lost because the receiver is also the listener and server.

8. Conclusion

Our experience with an operating Ethernet leads us to conclude that our emphasis on distributed control was well placed. By keeping the shared components of the communication system to a minimum and passive, we have achieved a very high level of reliability. Installation and maintenance of our experimental Ethernet has been more than satisfactory. The flexibility of station interconnection provided by broadcast packet switching has

encouraged the development of numerous computer networking and multiprocessing applications.

References

Abramson [1970]; Abramson and Kuo [1973]; Ashenurst and Vonderohe [1975]; Baran [1964]; Barnes, Brown, Kato, Kuck, Slotnick, and Stokes [1968]; Binder, Abramson, Kuo, Okinaka, and Wax [1975]; Cerf and Kahn [1974]; Computer [1974a]; Computer [1974b]; Crocker, Heafner, Metcalfe, and Postel [1972]; Crowther, Heart, McKenzie, McQuillan, and Walden [1975]; Farber, et al. [1973]; Farber [1975]; Fraser [1975]; Heart, Kahn, Ornstein, Crowther, and Walden [1970]; Heart, Ornstein, Crowther, and Barker [1972]; Kahn [1975]; Metcalfe [1972a]; Metcalfe [1972b]; Metcalfe [1973a]; Metcalfe [1973b]; Metcalfe [1974]; Murthy [1975]; Ornstein, Crowther, Krale, Bressler, Michel, and Heart [1975]; Retz [1975]; Roberts and Wessler [1970]; Roberts [1973b]; Rowe [1975]; Rustin [1970]; IBM [1974]; IBM [1975a]; Thomas [1973]; Thornton [1970]; Walden [1972]; Willard [1973]; Wulf and Bell [1972].